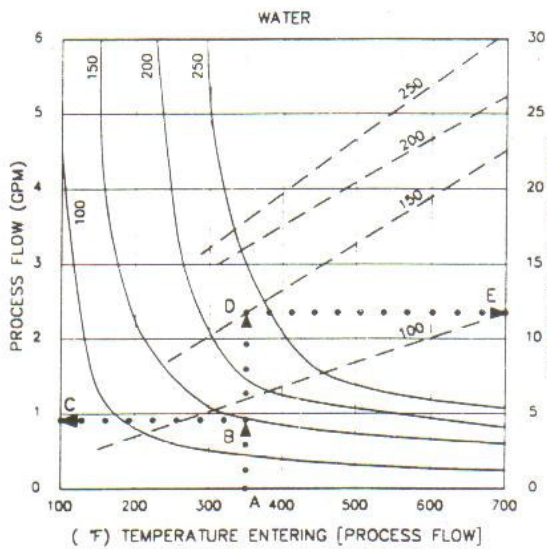
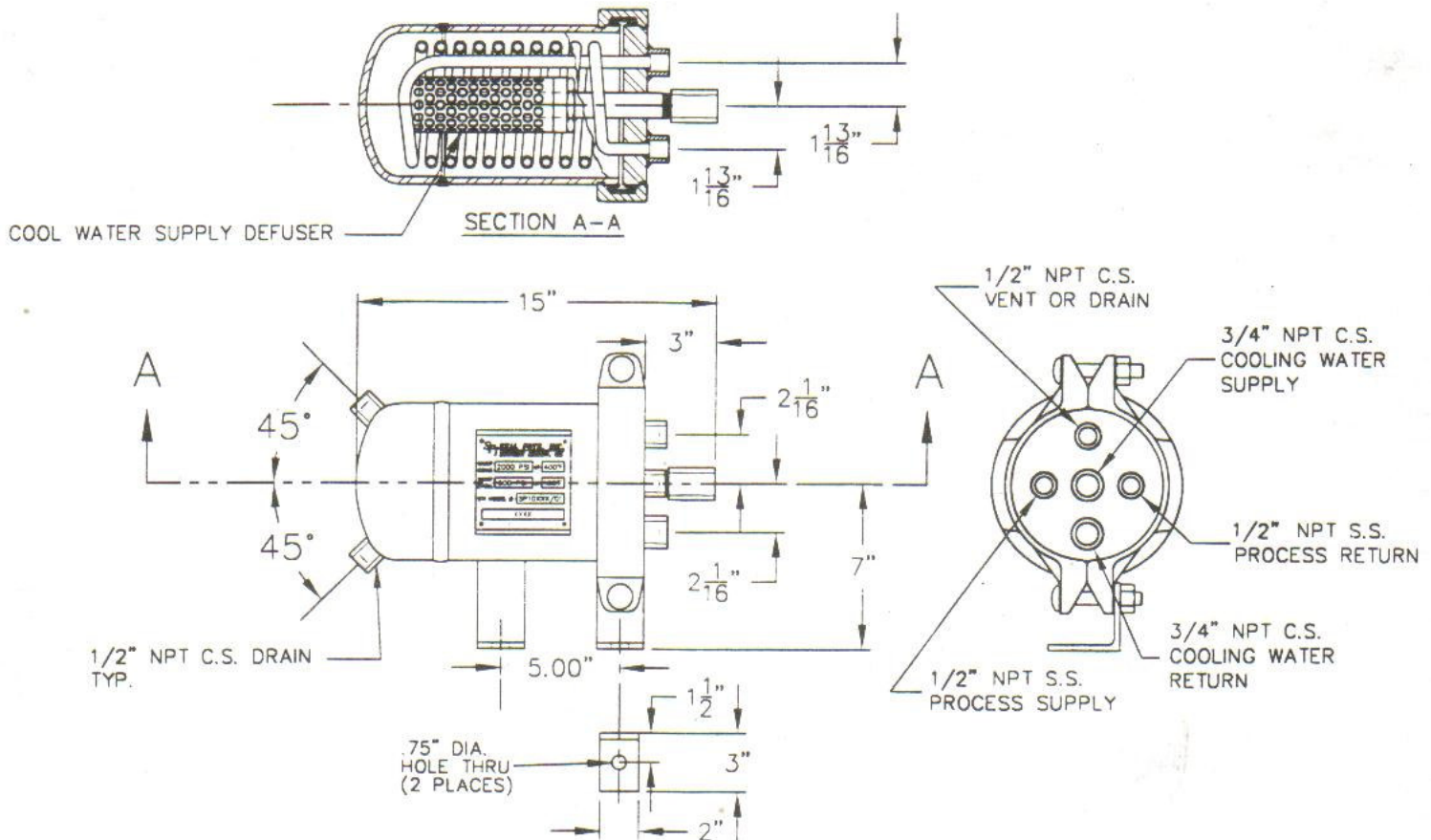


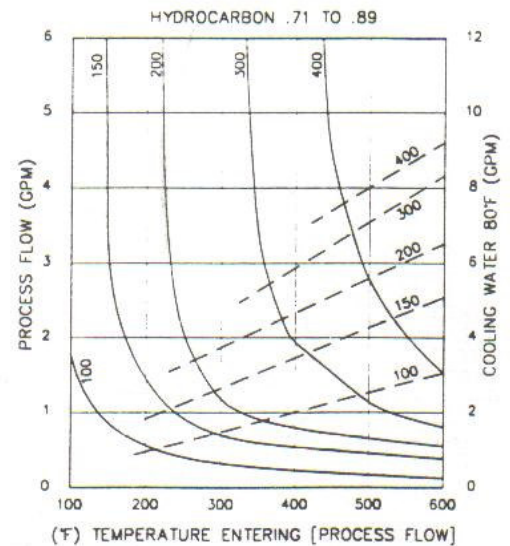
MODEL H-820-R REMOVABLE HEAD WATER COOLED HEAT EXCHANGER



DIRECTIONS: WATER CURVE

- Process inlet temp 350°F.
- Follow dotted line from 350°F to solid curve and outlet temperature, for example 150°F.
- Read to left process flow. (0.9 gpm).
- Continue up dotted line to dashed line at 150°F.
- Read to right cooling water required (12 gpm).

GRAPHS ARE FOR ESTIMATING PURPOSES ONLY.



SPECIFICATIONS:

- SHELL:
 - HEADS
 - MAX. ALLOW. WORKING PRESS.
- COIL:
 - TUBE SIZE
 - MAX. WORKING PRESSURE
 - COIL SURFACE AREA

- CARBON STEEL, 6", SCH. 40 SMLS
- CARBON STEEL, 1" PLATE
- 500 PSI @ 180°F
- 316 STAINLESS STEEL
- 1/2" .065 WALL x 20' LONG
- 2000 PSI @ 400°F
- 2.6 SQUARE FEET