

SEAL POTS, INC.

809 E. JACKSON PLACE
BROKEN ARROW, OK. 74012
PH: (918) 258-6484
FAX: (918) 258-7882

HOME OFFICE
50485 UTICA DRIVE
SHELBY TOWNSHIP, MI. 48315

API-682



API 610 - 3RD EDITION
682 RESERVOIR

STANDARD:

- 5 GAL. Sch. 40, 316L SS
- COOLING COIL
- WELD-PAD LEVEL GAUGE
- 3/4" SW x NPT FILL, VENT & DRAIN VALVES
- 1/8" DIA. VENT ORIFICE PADDLE
- 3/4" SUPPLY / RETURN
- PR. SWITCH

AVAILABLE OPTIONS:

- LEVEL SWITCHES
- STAND
- ASME CODE STAMP

USES:

- REFINERY PROCESSING
- CHEMICAL PROCESSING
- FOOD INDUSTRIES
- PHARMACEUTICAL INDUSTRIES

**OTHER OPTIONS AVAILABLE
UPON REQUEST
SEE OTHER SIDE**

API-682

RESERVOIR CAPACITY

5 GAL. SCH. 40 316/L

COOLING COIL

1/2" x .065 WALL x 20 ft. LG. 316/L SS

LEVEL GAUGE

WELD PAD w/ ARMORED REFLEX GLASS (10-3/4" VISIBILITY)

SEAL CONNECTIONS

3/4" CONN	NPT	<input type="checkbox"/>
	300# FLANGE	<input type="checkbox"/>
	600# FLANGE	<input type="checkbox"/>

REMOVABLE BOTTOM HEAD (C-19)

CL. 300#

CL. 600#

PRESSURE GAUGE

4-1/2" DIAL, 316 WT'D

RANGES AVAILABLE

0 - 60

0 - 100

0 - 300

0 - 600

SPECIFY OTHER

PRESSURE SWITCH

1/2" NPT, w/ SS DIAPHRAGM (DPDT) 316 WT'D

(PLAN 52) 5-30 PSI

(PLAN 53) 20-500 PSI

- SEE NOTE - 1.) a.
EXPLOSION PROOF - (HERMETICALLY SEALED)

BLOCK / BLEED VALVE

1/2" NPT, MULTI-PORT

LEVEL SWITCH

3/4" NPT, (DPDT) 316 WT'D

LOW - (SEE NOTE 1.) b.) -

HIGH

BOTH

EXPLOSION PROOF - (HERMETICALLY-SEALED)

VENT ORIFICE 3/4" PLAN 52 (ONLY)

1/8" DIA.

FLANGED - CL. 300#

FLANGED - CL. 600#

STAND

CARBON STEEL

GALVANIZED

DRAIN, VENT & FILL VALVES

GATE VALVE - 3/4" CL. 800#

PIPING AND FITTINGS

THREADED

SOCKET WELDED

STANDARD: SCH. 80 / CL. 3000#

ASME CODE AND STAMP

U STAMP

NATIONAL BOARD REGISTRATION

NOTES

1.) API-682 STATES:

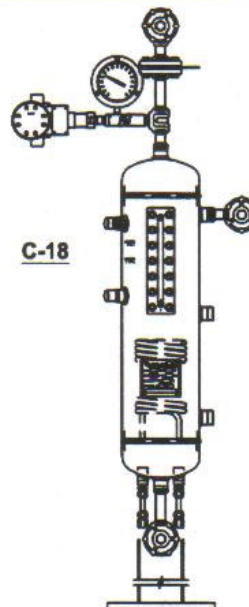
a.) 4.5.4.1.7 UNLESS OTHERWISE SPECIFIED RESERVOIRS SHALL BE EQUIPPED WITH A PR. SWITCH.

b.) 4.5.4.1.8 UNLESS OTHERWISE SPECIFIED RESERVOIRS SHALL BE EQUIPPED WITH A (LLA) LOW LEVEL ALARM. AND WHEN SPECIFIED, (HLA) HIGH LEVEL ALARMS ARE DATA SHEET ITEMS.

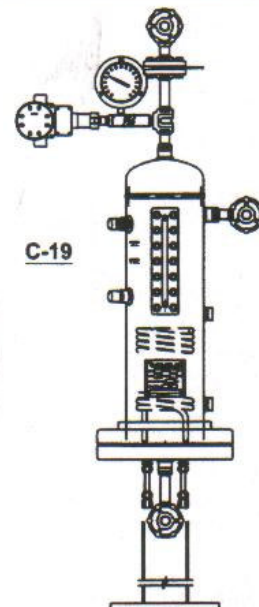
2.) OTHER OPTIONS ARE AVAILABLE UPON REQUEST.

3.) ALL RESERVOIRS ARE EQUIPPED WITH 1/2"-13 UNC MOUNTING NUTS.

TAG NUMBERS: _____



C-18



C-19

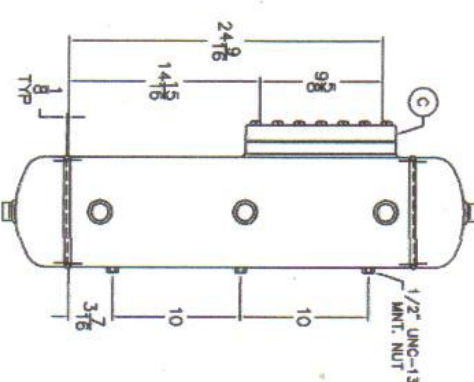
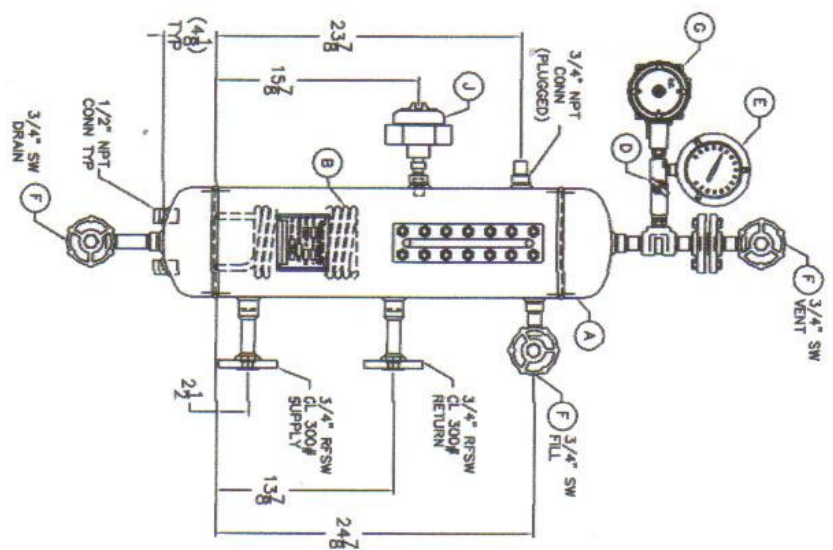
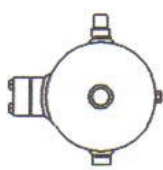
(IF FILLED IN, DATA WILL APPEAR ON DRAWING)

CUSTOMER DATA

CUSTOMER: _____

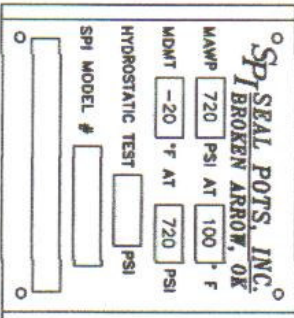
REF.: _____

S_P1 SEAL POTS, INC. BROKEN ARROW, OK.
 FAX (918) 258-7882
 E-MAIL: SEALPOTS@WEBZONE.NET



ITEM	QTY	DESCRIPTION	MAT'L.
A	1	RESERVOIR: 8" SCH. 40 (SMLS)	316/L
B	1	COIL: 1/2" DIA. x .065 WALL x 20' LG. (SMLS)	316/L
C	1	LEVEL GAUGE: 10-1/4" VISIBILITY (INFERNO OR EQ.)	316/L WTD
D	1	BLK./BLD. VALVE: 1/2" NPT. MULTI-PORT (YES OR EQ.)	316 WTD
E	1	PR. GAUGE: 4-1/2" DIAL. 0-300 PSI. (YMKA OR EQ.)	316 WTD
F	3	GATE VALVE: 3/4" SW X SW. CL. 800# (WARREN OR EQ.)	316/L
G	1	PRESS SWITCH: (U.E. QJ120-10280) 5-30 PSI. DPDT. CSA / UL APPR. HERM. SEALED. CLASS 1, DIV 1, GR B, CAD, X-PROOF 3/4" ELEC CONN., 110/250/480 VAC OR 24 VDC	316 WTD
J	1	LOW LEVEL SWITCH: ULTRASONIC TYPE (MAGNETROL 910-PIAH-001), DPDT, CSA / FM / GEN'ELEC APPR., 120 VAC, HERM SEALED CLASS 1, DIV 1, GR CAD, X-PROOF, 3/4" ELEC CONN.	316 WTD
-	-	PIPE/FITTING: SCH. 80 / CL. 3000#	316/L
-	-	FLANGE: RFSW, CL. 300#	316/L

- 1.) ALL DIMENSION ARE ±0.25 UNLESS OTHERWISE SPECIFIED.
- 2.) MAWP 720 PSI @ -20 TO 100° F.
- 3.) VESSEL HYDRO: 936 PSIG.
- 4.) VESSEL TO BE BUILT PER ASME SECT. VIII, DIV. 1.
- 5.) CODE STAMP NOT REQUIRED.



PART CODE: 4356B2D121

INCHES [] MILLIMETERS () REFERENCE ONLY

SPI SEAL POTS, INC. BROKEN ARROW, OKLAHOMA
 PH: (918) 258-6884 / FX: (918) 258-7882

DATE: 7/19/02 SCALE: NONE QTY: REV: DRAWN BY: WCP

TITLE: 5 GAL. RESERVOIR/PLAN 53 DATE:

CUSTOMER: P.O. No.: SPI JOB # APPROV. BY: