

ML8 SERIES API 610 7th & 8th Ed. Process Pump Lube Oil Systems



Manifold design features include:

- Reduced cost
- Flexible arrangement, left/right hand & mirror units
- Compact assembly uses less space on train
- Ease of maintenance
- Predesigned to accommodate multiple popular options at low cost

Flow rate:

24 to 80 GPM

Heat Load:

Up to 750,000 BTU/HR

Ambient conditions:

40°F to 100°F without heat tracing, insulation or heater

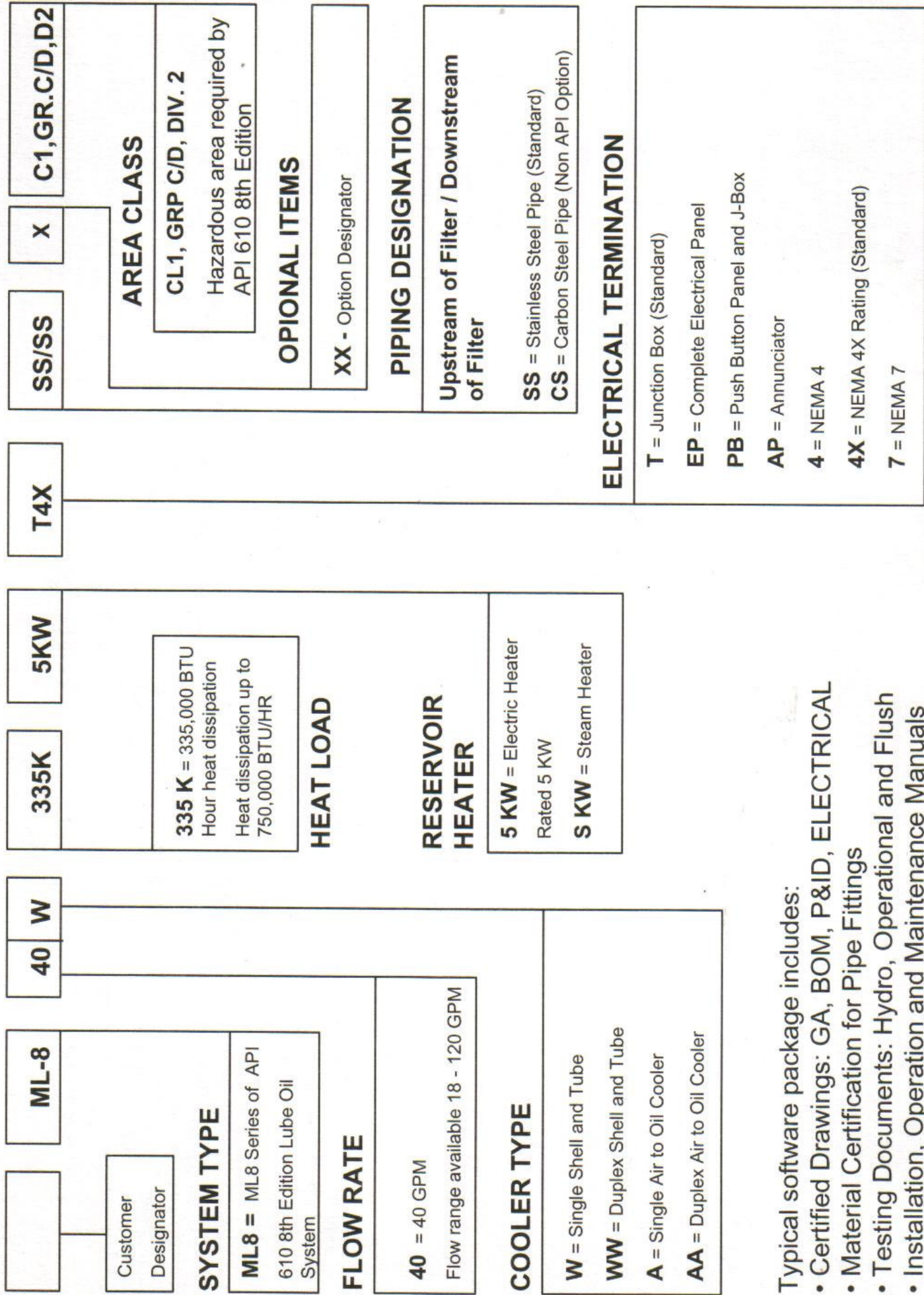
Electrical Rating:

Class 1, Group C/D, Div. 2

Piping:

ANSI B31, Welding procedures and welders certified per ASME Section IX

MODEL NUMBER CODE - ML8 SERIES API 610 8TH EDITION



Typical software package includes:

- Certified Drawings: GA, BOM, P&ID, ELECTRICAL
- Material Certification for Pipe Fittings
- Testing Documents: Hydro, Operational and Flush
- Installation, Operation and Maintenance Manuals

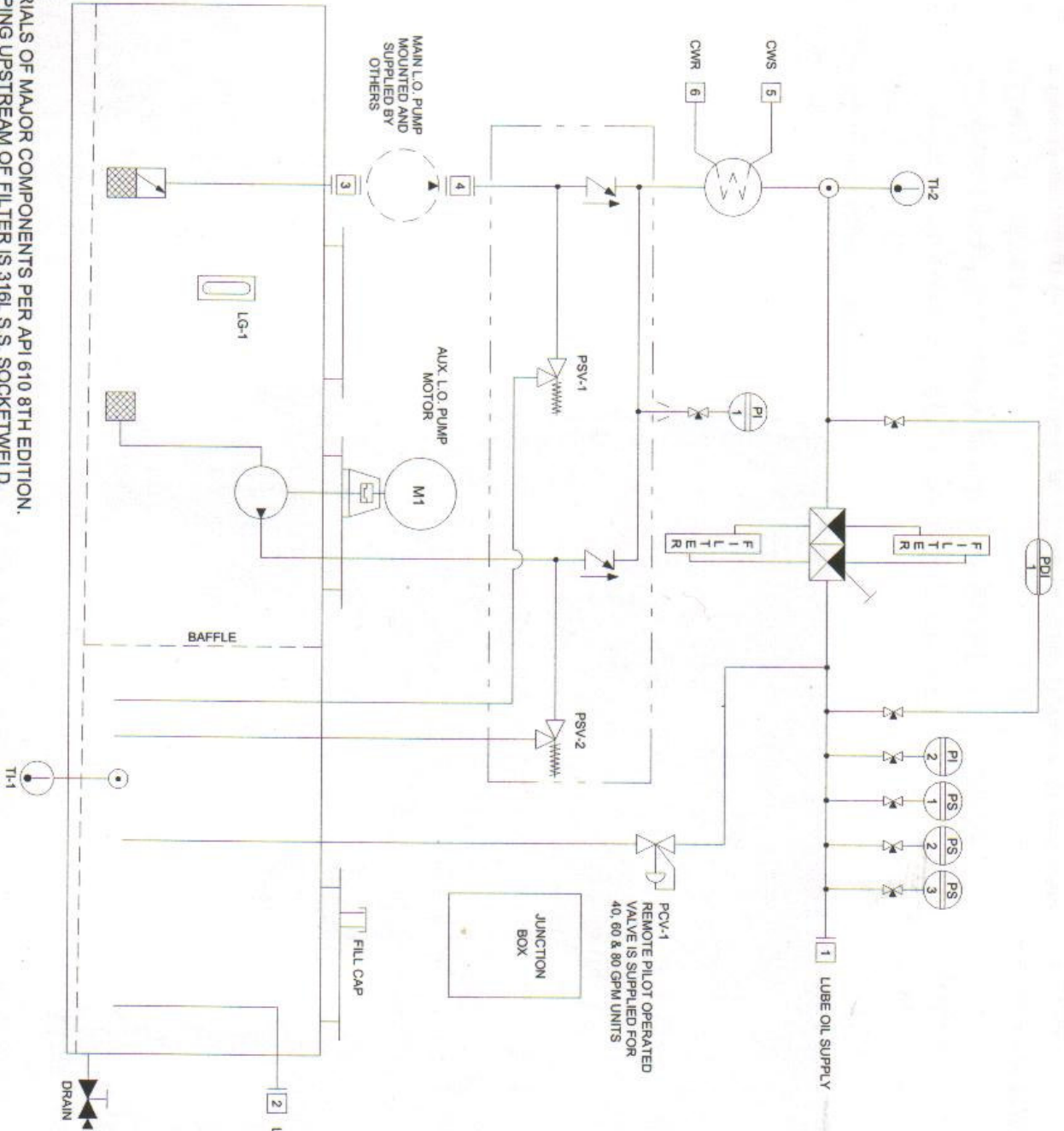
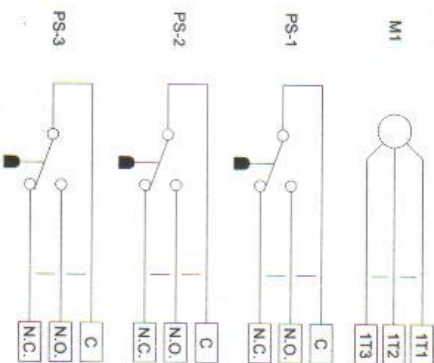
ML8 SERIES LUBE OIL SYSTEM
 THIS IS A VISUAL REFERENCE DRAWING ONLY. COMPONENTS & FLOW DIAGRAM MAY BE CHANGED BY LUBE-POWER, INC. BASED ON THE CUSTOMERS ACTUAL SPECIFICATIONS AND/OR QUOTED OPTIONS. DO NOT DESIGN ANY EQUIPMENT BASED ON THIS DRAWING.

FLOW RATE			
GPM	MOTOR HP	BTU/HR	
18	3.0	172,743	
40	5.0	335,543	
60	7.5	523,820	
80	10.0	698,154	

CUSTOMER CONNECTION LIST

LEGEND	SIZE / FUNCTION
1	150# R.F. S.O. FLANGE / LUBE OIL SUPPLY
2	150# R.F. S.O. FLANGE / LUBE OIL RETURN
3	150# R.F. S.O. FLANGE / MAIN PUMP OIL SUCTION
4	150# R.F. S.O. FLANGE / MAIN PUMP OIL DISCHARGE
5	NP/TF / COOLING WATER SUPPLY
6	NP/TF / COOLING WATER RETURN
7	NP/TF / FUTURE THERMOWELL

ELECTRICAL CONFIGURATION



NOTES:

- MATERIALS OF MAJOR COMPONENTS PER API 610 8TH EDITION.
- ALL PIPING UPSTREAM OF FILTER IS 316L S.S. SOCKETWELD.
- ALL PIPING DOWNSTREAM OF FILTER IS 316L S.S. BUTTWELD.
- ALL FLANGES ARE 150# SLIP-ON 316L S.S. WITH FLEXITALLIC GASKETS.
- BLOCK & BLEED VALVES FOR EACH PRESSURE INSTRUMENT.
- 5" DIAL THERMOMETERS WITH 304 S.S. THERMOWELLS.
- 304 S.S. RESERVOIR WITH SLOPING BOTTOM, MANWAYS & BAFFLE.
- 1/2" .065" WALL 316 S.S. SENSE LINES WITH BI-LOK FITTINGS.
- 4.5" DIAL PRESSURE GAUGES, S.S. WETTED PARTS & BLOW-OUT BACK.
- HERMETICALLY SEALED CONTACTS IN PRESSURE SWITCH WITH S.S. WETTED PARTS.
- ALL GAUGE BOARDS ARE S.S.
- HYDROSTATIC TEST TO 1.5 TIMES MAIN RELIEF SETTING
- OPERATIONAL TEST OF ALL DEVICES
- OPTIONAL COMPONENTS AVAILABLE ON REQUEST