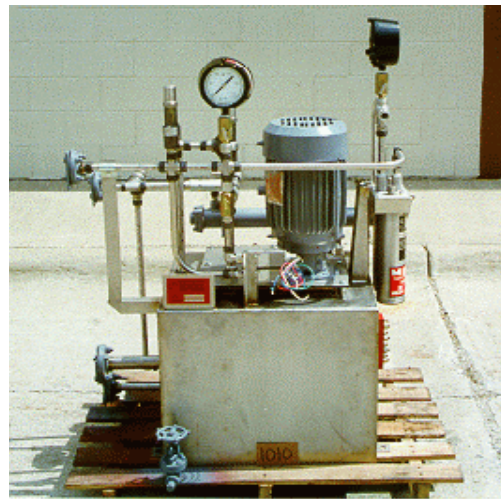
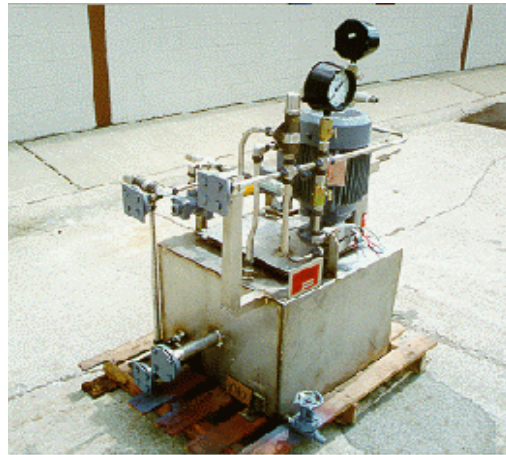




LUBE-POWER, INC.

LM4 SERIES API 611 4 TH Edition Turbine Lube Oil Systems



LM4 Series is manufactured in accordance with API 611 3rd Edition.

Manifold design features include:

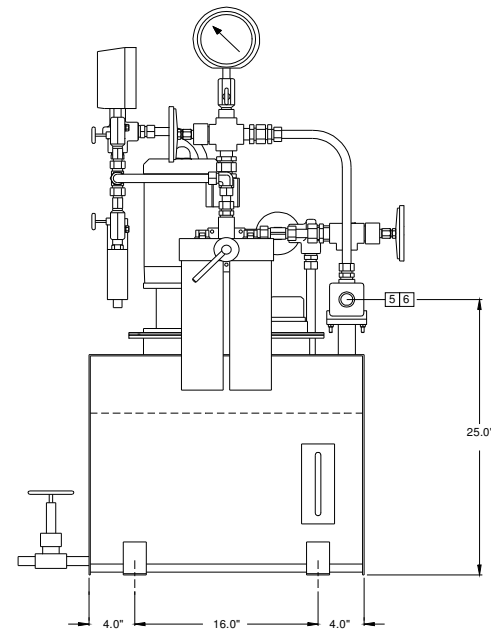
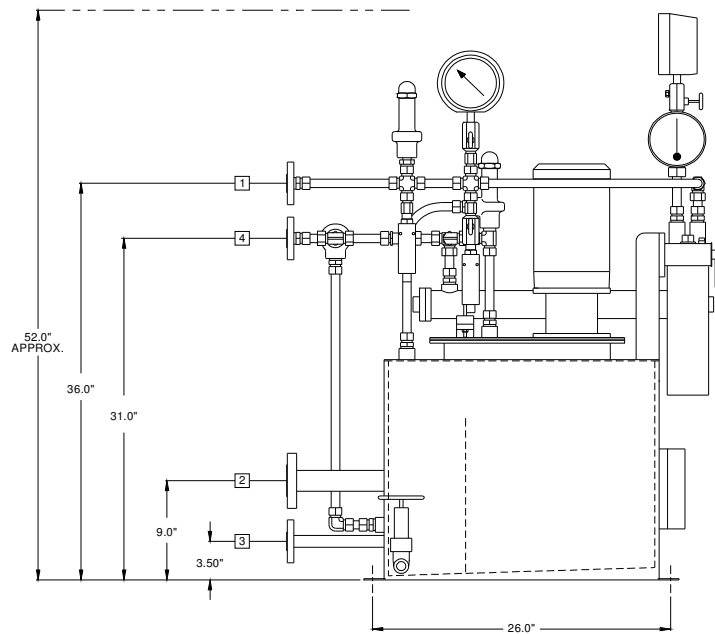
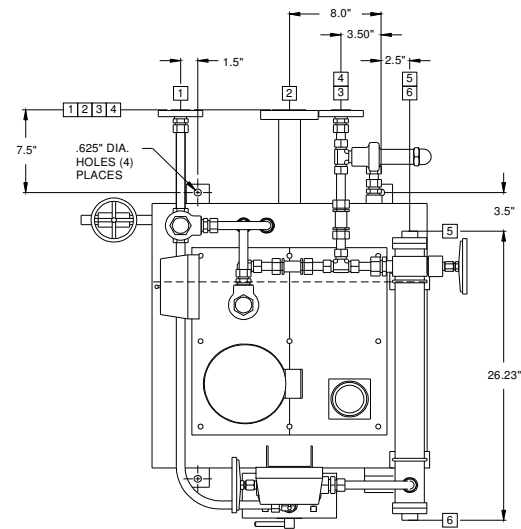
- Reduced cost
- Flexible arrangement, left/right hand & mirror units
- Compact assembly uses less space on train
- Ease of maintenance
- Predesigned to accommodate multiple popular options at low cost
- All stainless steel gauge board, tank and piping

Flow rate:	.5 to 8 GPM
Heat Load:	Up to 70,000 BTU/HR
Ambient conditions:	40°F to 100°F without heat tracing, insulation or heater
Electrical Rating:	Class 1, Group C/D, Div. 2
World Wide	
Compatibility:	Available
Piping:	ANSI B31, Welding procedures and welders certified per ASME Section IX Tubing available for low flow rates.

LM4 SERIES LUBE OIL UNIT

NOTES

1. THIS IS A VISUAL REFERENCE DRAWING ONLY. DIMENSIONS, COMPONENTS & LAYOUT MAY BE CHANGED BY LUBE-POWER, INC. BASED ON CUSTOMERS ACTUAL SPECIFICATIONS AND/OR QUOTED OPTIONS. DO NOT DESIGN ANY EQUIPMENTS BASED ON THIS DRAWING.
2. ALL PIPE BENDS ARE 3D MIN.
3. OPTIONS SHOWN ON THIS DRAWING.



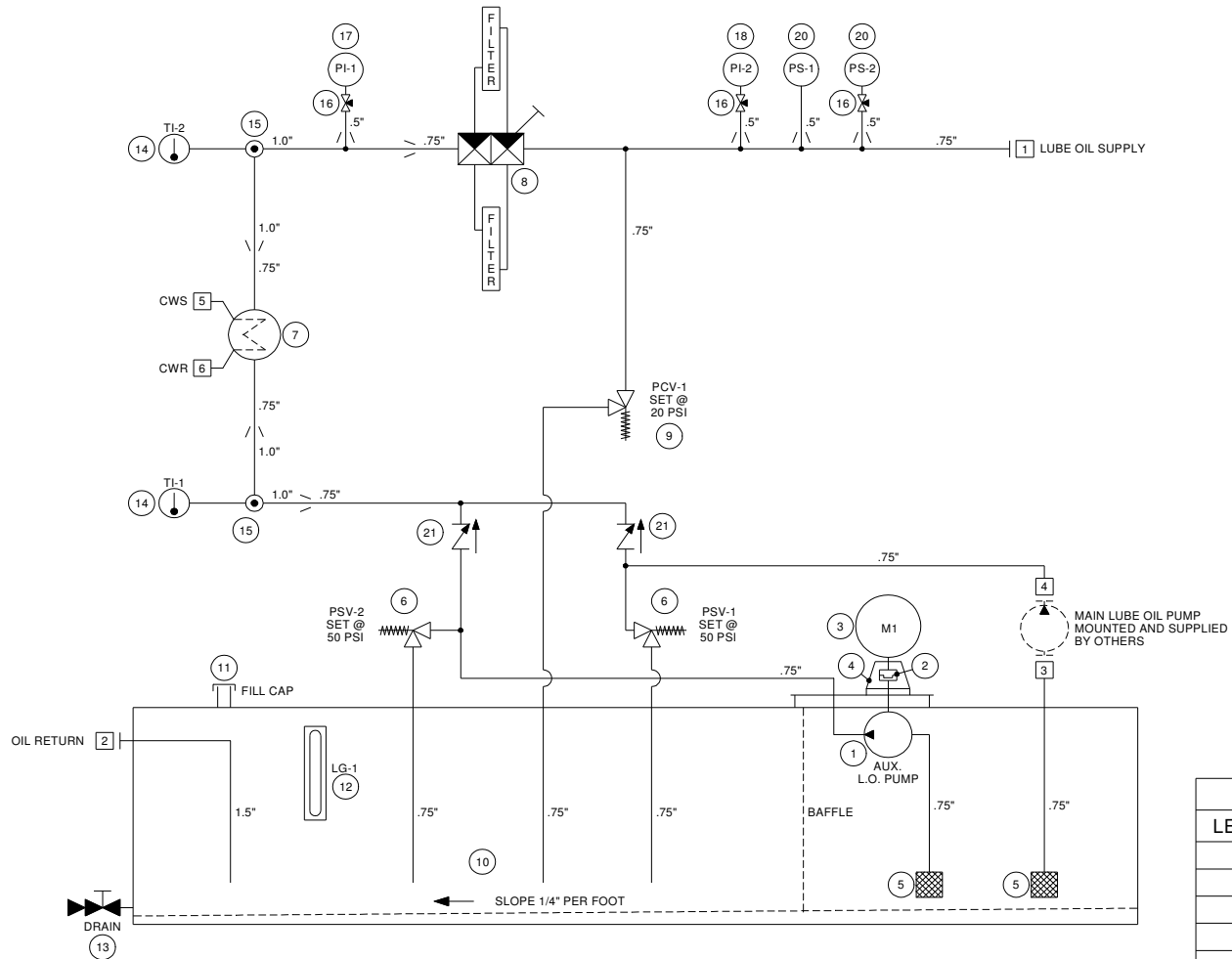
THIS DRAWING INCLUDES CONFIDENTIAL INFORMATION WHICH IS THE PROPERTY OF LUBE-POWER, INC. THIS COPY IS LOANED FOR A SPECIFIC PURPOSE, WITH THE UNDERSTANDING THAT IT WILL NOT BE REPRODUCED, USED FOR ANY OTHER PURPOSE OR DISCLOSED TO OTHERS WITHOUT WRITTEN CONSENT OF LUBE POWER, INC.



LUBE-POWER, INC.
SHELBY TOWNSHIP, MICHIGAN

API 611 4 TH EDITION
LUBE OIL ASSEMBY

DATE: 11/01/00
DWG. No.: ASSY-LM4



LM4 SERIES LUBE OIL SYSTEM
 THIS IS A VISUAL REFERENCE DRAWING
 ONLY. COMPONENTS & FLOW DIAGRAM
 MAY BE CHANGED BY LUBE-POWER, INC.
 BASED ON THE CUSTOMERS ACTUAL
 SPECIFICATIONS AND/OR QUOTED
 OPTIONS. DO NOT DESIGN ANY
 EQUIPMENT BASED ON THIS DRAWING.


FLOW RATE		
GPM	MOTOR HP	BTU/HR
4	1.0	15,000
6	1.0	30,000
8	1.0	45,000

CUSTOMER CONNECTION LIST	
LEGEND	SIZE / FUNCTION
1	150# R.F. S.O. FLANGE / LUBE OIL SUPPLY
2	150# R.F. S.O. FLANGE / LUBE OIL RETURN
3	150# R.F. S.O. FLANGE / MAIN PUMP OIL SUCTION
4	150# R.F. S.O. FLANGE / MAIN PUMP OIL DISCHARGE
5	NPTF / COOLING WATER SUPPLY
6	NPTF / COOLING WATER RETURN

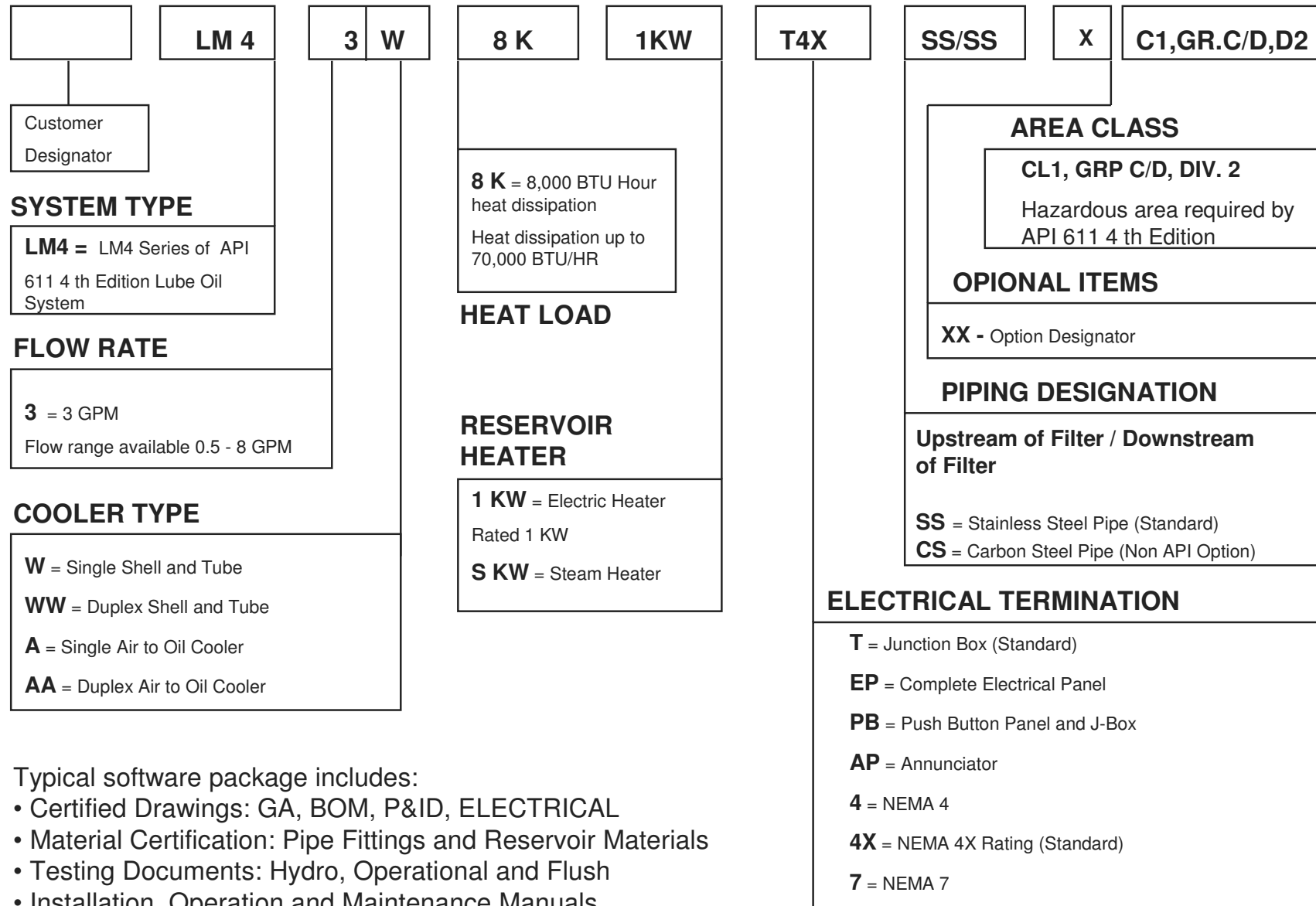
NOTES:

- MATERIALS OF MAJOR COMPONENTS PER API 611 4 TH EDITION.
- ALL PIPING UPSTREAM OF FILTER IS 304 S.S. SOCKETWELD.
- ALL PIPING DOWNSTREAM OF FILTER IS 304 S.S. BUTTWELD.
- ALL FLANGES ARE 150# SLIP-ON 304 S.S. WITH FLEXITALLIC GASKETS.
- BLOCK & BLEED VALVES FOR EACH PRESSURE INSTRUMENT.
- 5" DIAL THERMOMETERS WITH 304 S.S. THERMOWELLS.
- 304 S.S. RESERVOIR WITH SLOPING BOTTOM, MANWAYS & BAFFLE.
- 1/2" .065" WALL 304 S.S. SENSE LINES WITH BI-LOK FITTINGS.
- 4.5" DIAL PRESSURE GAUGES, S.S. WETTED PARTS & BLOW-OUT BACK.
- HERMETICALLY SEALED CONTACTS IN PRESSURE SWITCH WITH S.S. WETTED PARTS.
- ALL GAUGE BOARDS ARE S.S.
- OPTIONAL COMPONENTS AVAILABLE ON REQUEST
- HYDROSTATIC TEST TO 1.5 TIMES MAIN RELIEF SETTING
- OPERATIONAL TEST OF ALL DEVICES

THIS DRAWING INCLUDES CONFIDENTIAL INFORMATION WHICH IS THE PROPERTY OF LUBE-POWER, INC. THIS COPY IS LOANED FOR A SPECIFIC PURPOSE WITH THE UNDERSTANDING THAT IT WILL NOT BE REPRODUCED, USED FOR ANY OTHER PURPOSE OR DISCLOSED TO OTHERS WITHOUT WRITTEN CONSENT OF LUBE POWER, INC.

 LUBE-POWER, INC. SHELBY TOWNSHIP, MICHIGAN	
API 611 4 TH EDITION LUBE OIL FLOW SCHEMATIC	DATE: 11/01/00 DWG. No.: FLOW-LM4

MODEL NUMBER CODE - LM 4 SERIES API 611 4 RD EDITION



Typical software package includes:

- Certified Drawings: GA, BOM, P&ID, ELECTRICAL
- Material Certification: Pipe Fittings and Reservoir Materials
- Testing Documents: Hydro, Operational and Flush
- Installation, Operation and Maintenance Manuals